



# The Branding Iron

DUARTE HISTORICAL SOCIETY

JAN-FEB-MARCH 2016

## President's Message

For years the Duarte Museum has housed hundreds of local newspapers dating back to the 1940s. These papers contain an historical record of life in Duarte during that time. For many years the Duarte Dispatch and other papers covered news, social events, political matters and human interest stories. It was not unusual that every local event was covered, no matter how small, in articles accompanied by quotes and photographs.

Over the years these saved papers have started to break down. Also, they take up room needed for other artifacts. Last year the son and daughter of our late curator, Irwin Margiloff, endowed enough money to the museum for the purchase of a large-scale scanner, Dilip Tiwari, Assistant Curator, and Kayko Jorgenson have begun scanning the newspapers with help from Boy Scouts of Troop 180 from Duarte and Monrovia. Their leaders, Andrew Thompson and Eric Pierce, will supervise.

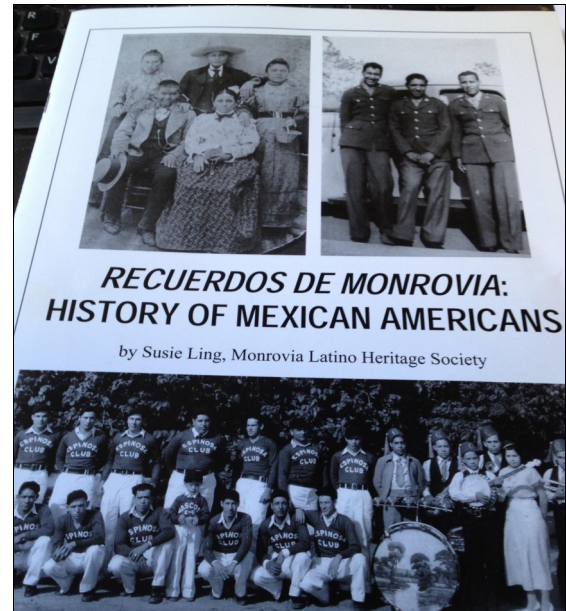
The scanned papers will be offered to the public before they are trashed.

-Claudia Heller

## POETRY READING SET

Local poet Rick Whelan will recite his poetry on February 13, 3:00 p.m. at the Museum. His lyrics are mostly tied to local history and bicentennials of SG Valley cities. One poem mourns the loss of the Duarte Hanging Tree. The public is invited to join in and share their poems.

## MEXICAN-AMERICAN HISTORY TALK FEB. 12



PCC Associate Professor of History and Ethnic Studies Susie Ling will present *Recuerdos de Monrovia: History of Mexican Americans* which, due to a blurred border, will surely bring to light Duarte pioneer families. The program is based on her published booklet setting forth dozens of oral histories of pioneer families, life on the early Rancho, life south of the Pacific Electric tracks in the 1920s, the ancestry of Mexican Americans, and more.

A potluck spread of Mexican food will begin at 6 p.m. and the program commences at 7 p.m. at the Museum in Encanto Park. Free. Bring your favorite south-of-the border dish to share.

**EXECUTIVE BOARD MEETING  
WED., JANUARY 27, 4:30 P.M.  
AT THE MUSEUM**

## STEVE BAKER TAKES US FOR A RIDE



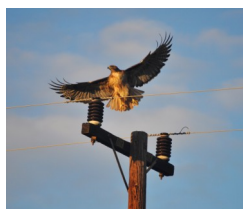
*A Ride through Duarte in the year 1900 was presented by Steve Baker for the MOHPG and again for the general membership.*

From the museum archives, Steve has created a virtual ride through Duarte at the century's turn.

Giving the Museum a holiday glow, Jeanne Valleroy is exhibiting her Christmas village collection through January 15.



## BIRDWALK



An early October morning walk along the bioswale trail and river bike path rendered a sighting of over 30 bird species. About 20 birders followed ornithologist Kimball Garrett, collections manager at the Natural History Museum of Los Angeles County as he lectured on local natural history.

## WHAT DOES THE SG MOUNTAINS NATIONAL MONUMENT DESIGNATION MEAN TO US?



Will the new National Monument affect quarrying operations? What are the boundaries and are they permanent? What can we do to take advantage of this new National Monument?

Joseph Llewellyn, Forest Service Partnership Development Coordinator, will answer your questions on March 5, 2:00 p.m. at the Museum. He will fill us in on the details and what changes it will mean to the public. PLEASE JOIN US.

## TEACUPS OF THE WORLD



For the holiday season museum visitors enjoyed the teapot and teacup collection of Reyna Diaz, long-time Duartean and 18 year school board member.



## MAXWELL STUDENTS VISIT MUSEUM



As the bus pulled up, more than fifty third graders from Maxwell Elementary School filed into the Duarte Museum excited to augment what they learned about local history in school with that which is on display at the museum. Who was Andres Duarte? What is a smudge pot? Are those oranges real? Why is there a tennis exhibit? Who is Glenn Miller? Hundreds of questions filled the morning, and answers were forthcoming by museum volunteers. The students then enjoyed a bus ride through town to learn more about our history, followed by lunch at the Old Spaghetti Factory.



**Docent Mariellen Staller talks to Maxwell students about Duarte's tennis history.**

## FINALLY! THE DHS&M HAS A 501(c)3 DESIGNATION



**(L-R) Sylvia Ruiz presents Claudia Heller, Jack Ochoa and the membership with the 501(c)3 designation.**

**IN THE BEGINNING...**...the Duarte Historical Society and the Friends of the Library were a single corporation. As time went on, the two entities went their separate ways with the Friends eventually receiving corporation status on their own and their non profit status. With the help of Sylvia Ruiz, the DHS&M has finally amended their Articles of Incorporation which is certified by the Secretary of State and now officially has a non-profit status for tax purposes. Boardmember Ochoa will now embark on his fundraising plans, hoping to increase the museum treasury so that we can continue serving the public and preserving our local history.

**VISIT OUR WEBSITE AT**  
**[www.RanchoDeDuarte.org](http://www.RanchoDeDuarte.org)**

Contact Us

Phone: (626) 357-9419

Email: [info@RanchoDeDuarte.org](mailto:info@RanchoDeDuarte.org)

Twitter: [@RanchoDeDuarte](https://twitter.com/RanchoDeDuarte)

Instagram: [@RanchoDeDuarte](https://www.instagram.com/RanchoDeDuarte)

**PLEASE SUPPORT THE MUSEUM BY PAYING YOUR 2016 DUES. Student/teacher: \$10; Individual: \$15; Family: \$25; Life Time Supporter: \$500 (reserved for individuals and families); Business/Org. (see [www.RanchoDeDuarte.org](http://www.RanchoDeDuarte.org)). Secure PayPal Payment Process available**

**MARK YOUR CALENDAR!**

**JAN. 11, 4:30 p.m.:** FDL Community Interest Group at the Library, 1301 Buena Vista.

**JAN. 27, 4:30:** DHS&M E. Board Meeting

**FEB. 12, 6 p.m.:** Mexican Potluck

**FEB. 12, 7 p.m.:** "History of Mexican Americans in Monrovia" by Susie Ling.

**FEB. 13, 3 p.m.:** Poetry Reading by Rick Whelan and the public

**MAR. 5, 2 p.m.:** "What does the SG Mtn. National Monument mean to us?" by Joseph Llewellyn of the National Park Service.

**Duarte Historical Society & Museum**

P.O. Box 263, Duarte, CA 91009-0263

777 Encanto Parkway, Duarte

(626) 357-9419

[www.RanchoDeDuarte.org](http://www.RanchoDeDuarte.org)

Twitter & Instagram@RanchoDeDuarte

Open: Saturdays: 1-4 p.m.

1<sup>st</sup> & 3<sup>rd</sup> Wednesdays: 1-3 p.m.

President: Claudia Heller

Vice President: Sheri Uhlig

Treasurer: Steve Baker

Secretary: Zoe Osburn

Asst. Curator: Dilip Tiwari

Director: Boyd Leeson

Board Member: Jack Ochoa

Docent Coordinator: Sheri Uhlig

Photographer: Alan Heller

Exhibit Coordinators: Pauline Montgomery,

Mark Montgomery

Branding Iron: Claudia Heller, Jim Kirchner

Webmaster: Jack Ochoa

Duarte Historical Society & Museum  
c/o Claudia N. Heller  
277 Opal Canyon Road  
Duarte, CA 91010  
[RanchoDeDuarte.org](http://RanchoDeDuarte.org)

